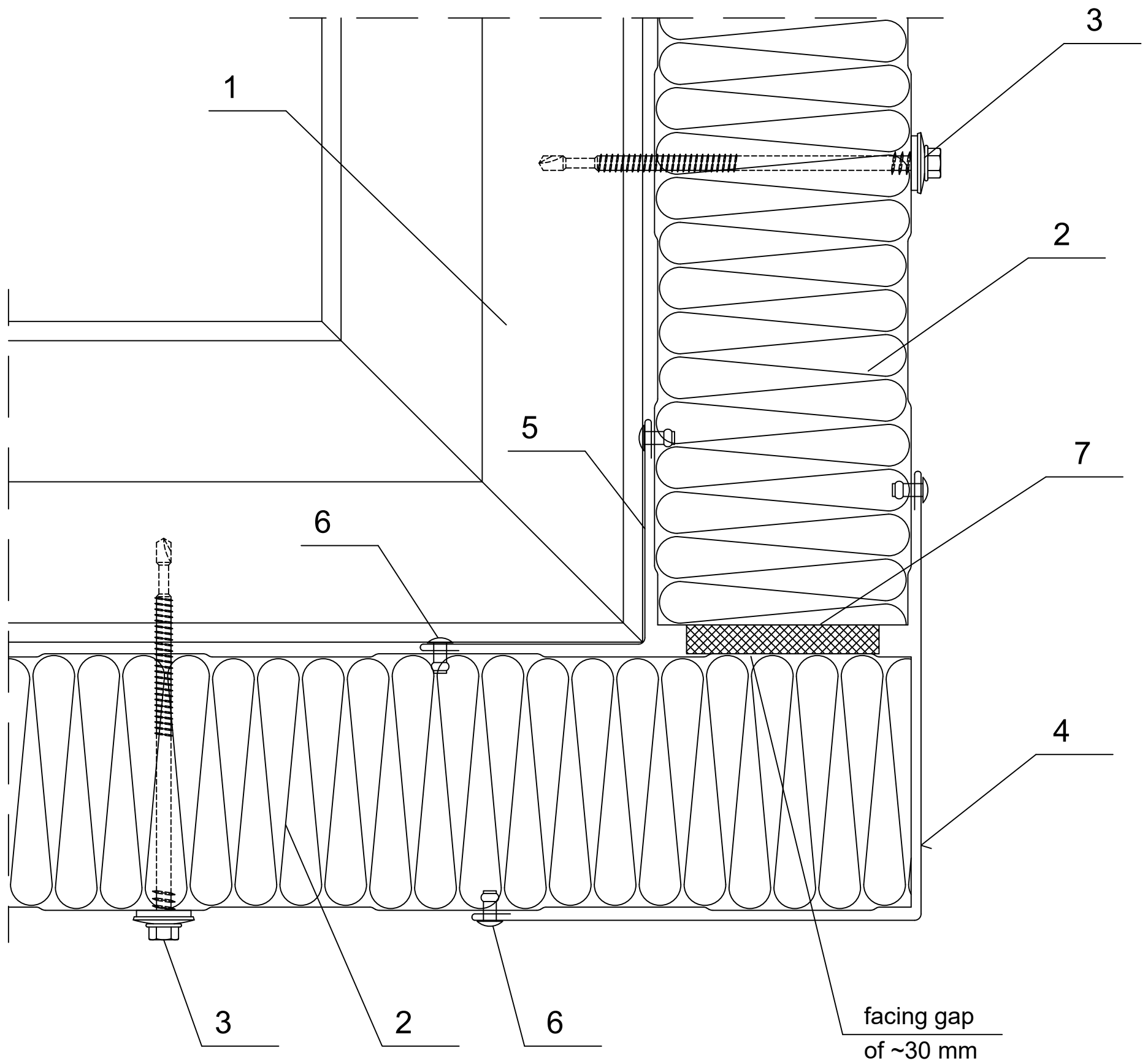


Date	Rev. date	Work nr.	Drw. nr.	Rev.
Drawn by Ruukki	Rev.	M27/S04	-	
Scale 1:3	Building		File nr. P2001/003-00039	



1. Steel sheeting rail acc. to engineering design of the structure
2. Ruukki SP2B PIR
3. Panel fastener for hot-rolled sheeting rail or for cold-bent sheeting rail
4. EA1B03 corner flashing
5. EA1B05 corner flashing
6. Steel rivet (every 300 mm)
7. Impregnated polyurethane sealant or expanding foam

\* for structures with high requirements regarding thermal insulation facing gap is ~30 mm;